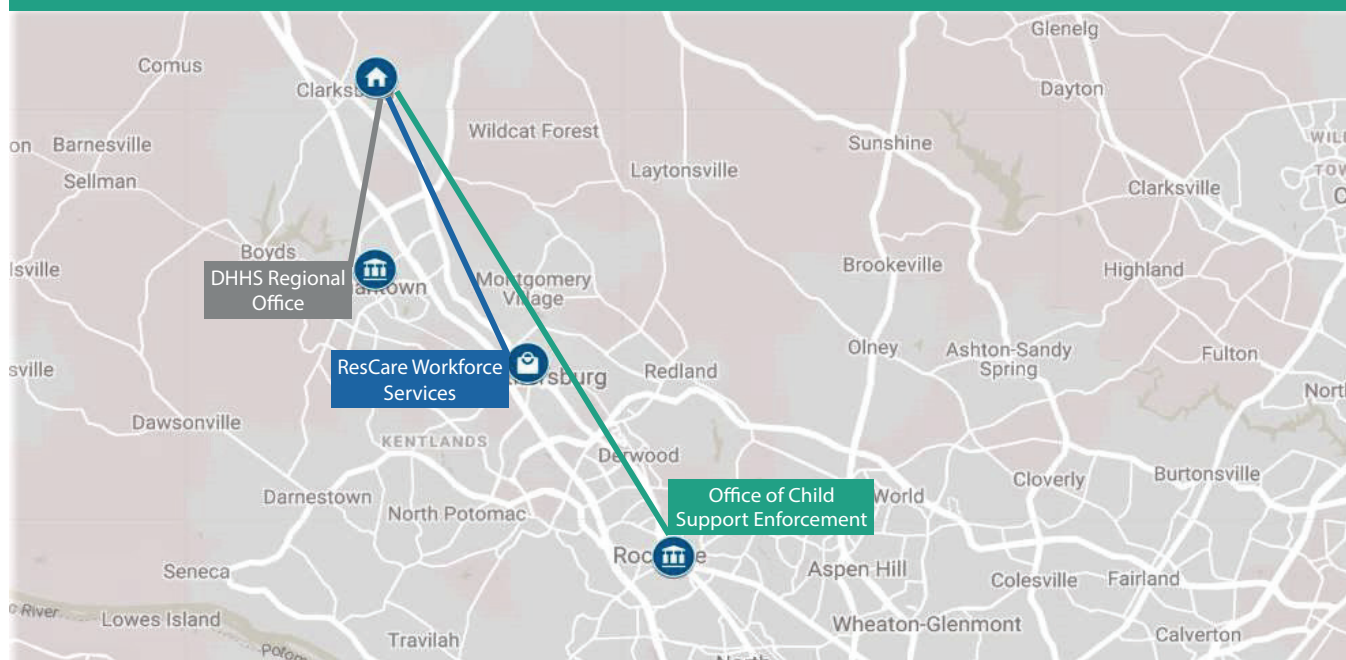
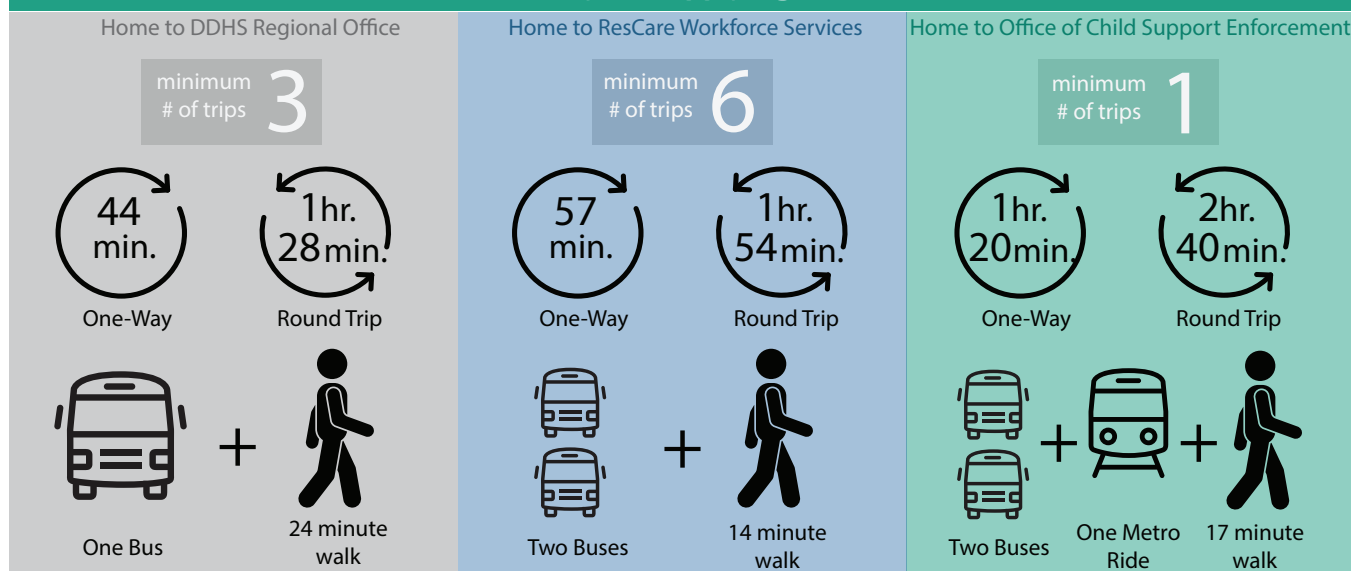


Commuting to Fulfill Work-Requirements is a Part-Time Job*



Minimum Number of Trips Necessary to Meet the Work Requirement within 30 Days of Applying for TANF



Parents applying for Temporary Assistance for Needy Families need to fulfill a number of requirements in order to receive assistance, many of which stem from the program's work requirement. In Montgomery County, Maryland, families need to go to ResCare Workforce Services, which contracts with the county to monitor compliance with the work requirement, to attend an orientation, meet with an Employment Services Specialist, pick up a transportation debit card, search for a job, and attend four mandatory workshops on subjects such as preparing a resume—all within the 30 days of applying for TANF. These mandatory meetings are on top of other administrative requirements, such as meeting with a county case manager, attending a substance use screening, and filing for child support enforcement, which require trips to different county offices. For families without cars, each of these mandatory meetings means significant time on public transit. Here we illustrate the minimum commuting time to fulfill all of the requirements for a single parent family with young children living in Clarksburg, Maryland. We assume they need child care, and therefore are allowed to search for a job from home until they receive child care assistance, which usually occurs near the end of the 30-day TANF application period. If the parent has child care, however, or does not need it, they are told to make the trip into ResCare Workforce Services (a 1hr 54 min roundtrip commute for this fictional family) to search for a job on the organization's computers, vastly increasing their time spent on public transportation.

* These public transit directions and commuting times were calculated mid-day, mid-week, using Google Maps.

This fact sheet and infographic are in the public domain. Permission to reproduce is not necessary provided proper citation of CSSP is made. Published June 2019.



**Center for the
Study of Social Policy**
Ideas into Action

© the Center for the Study of Social Policy
1575 Eye Street, NW #500, Washington, DC 20005
202.371.1565 | info@CSSP.org | www.CSSP.org